

Compaq iPAQ 31xx / 36xx / 37xx Replacement Metal Stylus Latch iPAQ Repair Guide by Nathan Dickman

<http://www.ipaqrepair.co.uk/>

Version 1.0

Introduction:

One of the easiest DIY repairs you can perform on your iPAQ PDA is to replace a worn or broken stylus latch, for a very small cost it can bring a new lease of life to your iPAQ.

If you need a stylus latch I sell them from my online iPAQ spare parts store located at <http://www.ipaqrepair.co.uk> or on eBay just look up my username Xbytez or send an email to: sales@ipaqrepair.co.uk

Required Tools:

A Torx size 6 (T6) Screwdriver.
New iPAQ metal stylus latch.
Kapton polyimide insulating tape.

Stage One:

Before you start the repair I recommend you switch the iPAQ off; you can perform this job without doing so but it is not recommended, remember to backup to your PC all important information and data before switching the unit off.



Stage Two:

Turn over the iPAQ so back is facing you. It is probably best to work with a soft cloth placed on you work area to prevent any accidental scratching to the front of the case while unscrewing the 4 main screws.



Proceed using a Torx size 6 screw driver to undo all four main case screws. If you do not have a Torx screwdriver available, a small jewellers cross head screwdriver can also be used.



Stage Three:

Once all four main case screws are removed using your fingernail, gently prise the case open start on the side without the quick record button beginning at the top of the iPAQ and working your way down the edge.



Run your finger nail all the way along the seam to the bottom of the case.



Next follow the same procedure on the opposite side of the iPAQ.

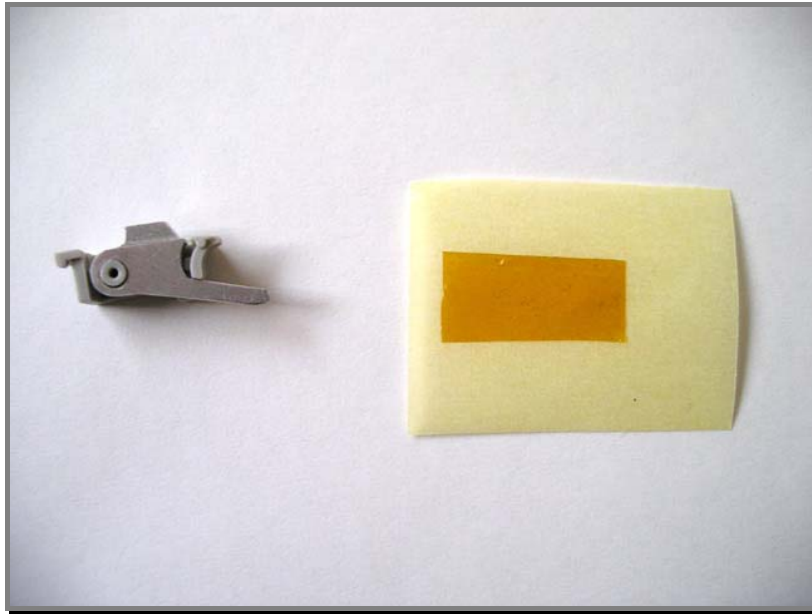


This should now allow the back of the case to be totally removed, the battery connector will easily disconnect, as it is just snap clipped onto the main board.

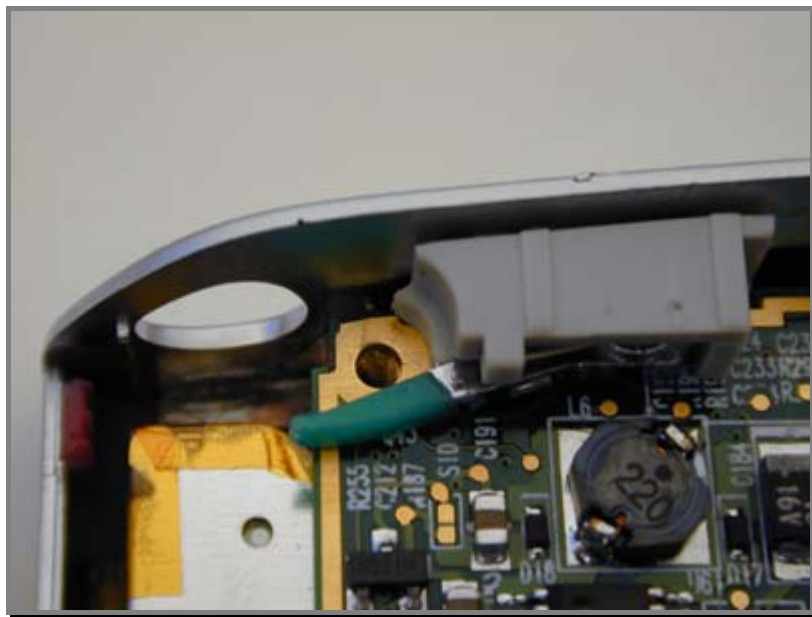


Stage Four:

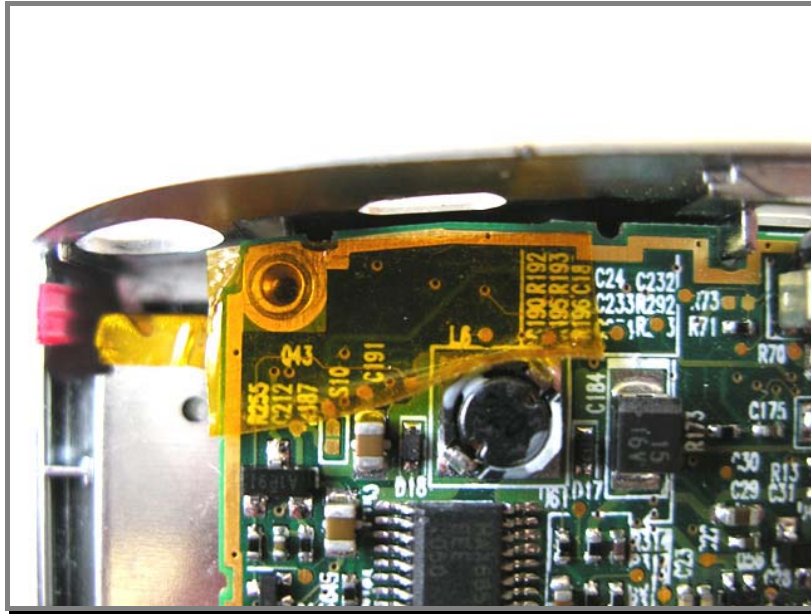
The iPAQ Metal Stylus latch repair kit consists of a strip of Kapton polyimide insulating tape, and the CNC machined aluminium latch.



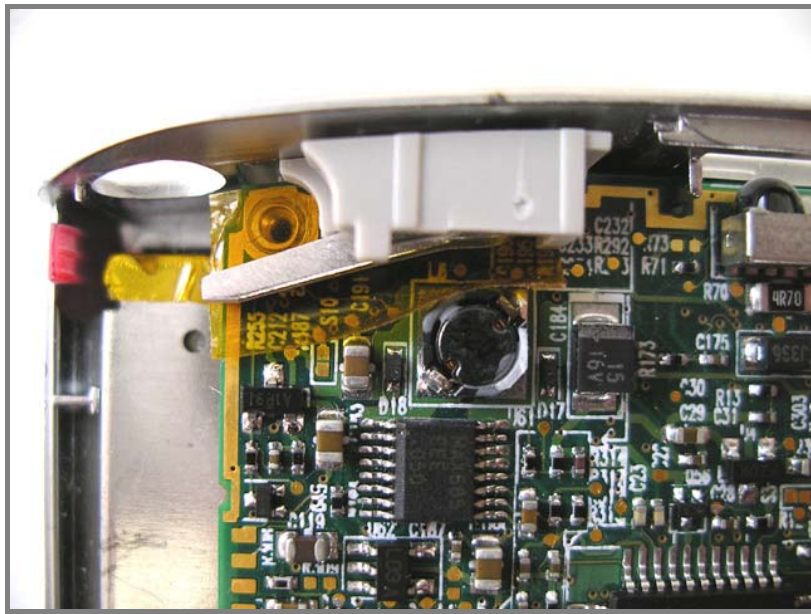
With the case now opened the stylus latch is resting on the main board, with a small down and outward twist the latch should come away with ease. Older revision latches are green in colour.



Next peel the Kapton tape from the backing paper and attach it onto the iPAQ main board, as show in the picture below, this insulates the metal stylus latch from the iPAQ main board.

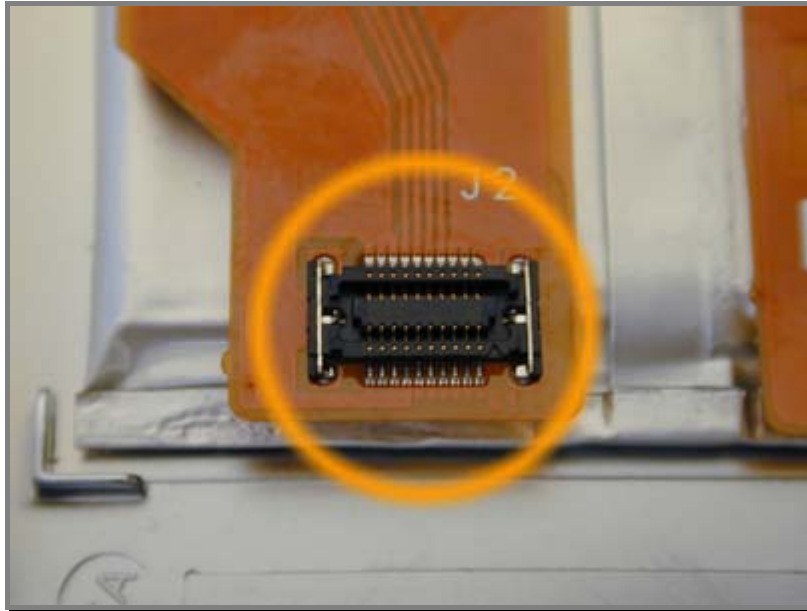


Place the new latch into the correct position this is easy to tell as the latch will fit flush with the main board.

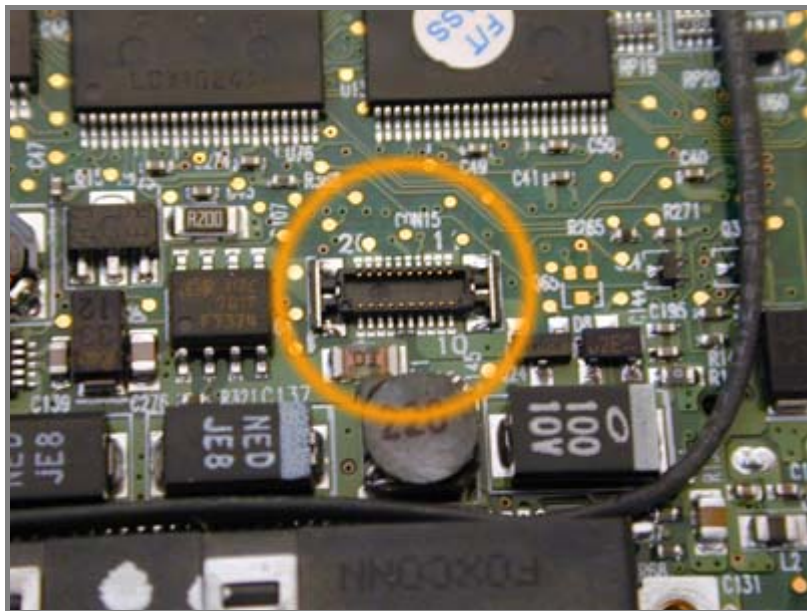


Stage Five:

The iPAQ now has to be re-assembled the most important task is to ensure the battery connector is attached to the main board.



The battery connector shown above needs to be attached to the main board connector shown below the two just snap fit together.



Once the battery connector firmly is attached to the main board you are now ready to re-attach the iPAQ's back casing.



Stage Six:

Now clip the lower part of the back case into the area shown below.



Gently clip the two halves of the casing back together, they should click easily back together. Then reinsert and tighten the four main case screws. Remember to slide the power switch back to the on position if you turned the unit off.



Voila you have now replaced your stylus latch. The stylus will now lock in place just as it should.

This document and images are © Nathan Dickman is you wish to distribute or use this document in any way please contact me via my website located at <http://www.ipaqrepair.co.uk/> to seek permission.

Revision History

Version 1.0 - 15:47 - 17/02/2004