

# PSP Repair and Parts

## PlayStation Portable Screen Replacement Guide.

### Introduction

This guide aims to provide you with assistance and tips for replacing a broken screen on a Sony PSP (PlayStation Portable).



A broken screen is a major problem for PSP users and renders the console useless until you are able to replace the screen. This repair is relatively straightforward and requires patience and careful handling.

### Required Tools

A Mini Crosshead Screwdriver (available [here](#) in the PSP Parts section of the website)

A Replacement PSP Screen (available [here](#) in the PSP Parts section of the website)

An air duster / can of compressed air (not essential)

### Stage One: Front Case Removal

The PSP is relatively straight forward to take apart, having seven screws holding the consoles casing together. Start by removing the visible screws on the right hand side near the headphone jack then move to the left hand side where there are four screws to take out. Two of these are visible, with the other two hidden underneath the “guarantee void” sticker, which you are going to have to peel away to access the screws.



Finally, remove the screw at the base of the console next to the barcode sticker. The front case will just lift off allowing you to access the inside of the PSP.

## Stage Two: Accessing the Screen



The Screen is protected by the lower button circuit which has to be removed in order to access the screen below. Start by un-hooking the circuit from the connector on the action button circuit board, this is a delicate operation as the latch is fragile and can snap easily.

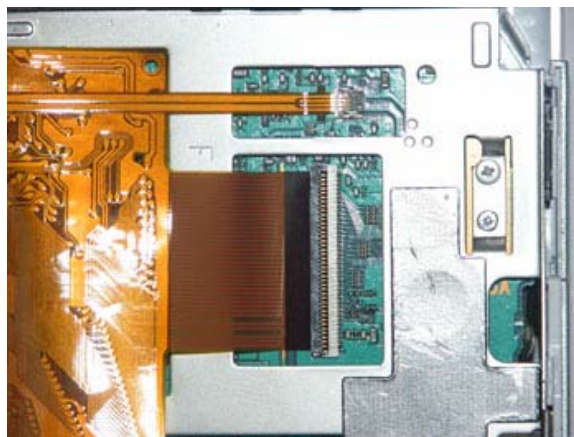
Once removed, you can un-hook the lower button circuit by levering it off on the upper left side using a fingernail. You should now be able to access the screen.



Do not take the lower button circuit off its metal mounting frame, although not a fatal error, this causes difficulties when reassembling the PSP as you have to re-align the circuit with the buttons.

## Stage Three: Removing the Screen

The Screen is attached to a frame by four small catches, these have to be released by carefully applying pressure to the catch whilst lifting the screen upwards. Do not under any circumstance bend the frame, as this will cause problems when fitting the new screen.



Once all four catches are loose, lift the screen out carefully and you should find that it is attached to the main board by two clamp bars (the screen connector and backlight). As with the lower button circuit, be careful when lifting the brown clamps as these are delicate. Then once removed, give the connectors a quick clean with the air duster.

## Stage Four: Re-assembling the PSP

This step is quite simple, using the expertise that you have gained from removing the screen, attach the new screen to the connectors on the main board, snapping it into place on the frame. Next reattach the lower button circuit to its connector and clip the metal back onto the frame. Now would be a good time to place the battery in the console and switch it on to test the connection.



Make sure you remove the plastic film on the screen absolutely last before reattaching the front case, as this will prevent any dust getting onto the screen, which can be quite distracting whilst playing games.



Slip on the front case and put all the screws in their original places, replace the battery and your screen replacement is complete.



Voila, you have successfully replaced the screen on your PSP.

The text and images are © iTech Repair Ltd if you wish to distribute or use this document in any way please contact us via the website located at: [http://www.ipaqrepair.co.uk/contact\\_us.php](http://www.ipaqrepair.co.uk/contact_us.php)