

IPAQ Repair and Parts
HP iPAQ rz1700 (rz1710 / rz1715 / rz1717) Series Battery Replacement Guide
By Nathan Dickman

<http://www.ipagrepair.co.uk>

Introduction

A DIY Battery replacement is one of the easiest repairs that can be done at home, cheaply and easily restoring your PDA to the same battery life as a brand new model.

This guide aims to provide some tips and advice for the procedure of changing a main internal battery.

Once you have fitted your battery it is important to be aware that this is a Lithium battery, which means that it cannot be overcharged. The best practise for getting the most out of your Lithium battery is to leave it on charge as much as possible (even if the unit shows a full charge light) as this will do no damage to either the unit or battery.

It is worth bearing in mind that running the battery flat before recharging is the worst way to treat a Lithium unit. This bad practise comes from NiCad batteries which do run best with a "run to flat" process however as discussed this is **not** the practise to apply to Lithium batteries.

Simply remember that your Lithium battery cannot be overcharged and lasts far longer if kept on charge as much as possible, by following these simple steps you should be able to get far much from your iPAQ battery.

Required Tools

A Torx size 6 (T6) Screwdriver (available [here](#) in the tools section of the website, suitable for all models)

A official HP rz1700 Series battery (available [here](#) in the batteries section)

Step One

Firstly it is advisable to back up any important data currently held on your iPAQ unit, once you are ready to begin the repair turn the unit over so that the back is facing you. Be careful that your work surface is clean and clear (a cloth is advisable) so that there is no danger of scratching the front of your screen. Remove the stylus, and then unscrew the four back case screws with your Torx size 6 screwdriver.



Step Two

Once you have removed the four back screws you will need to remove the back case in order to access the main board and battery. The back case can be popped off by using your nails, or by carefully using a flat headed screwdriver (but beware scratching the case), for this reason we recommend trying to open it with your nails first. The back case can be pried away from the front starting at the curve at the bottom left side of the case. Once one side is off, repeat on the other side. Carefully move your nail up the side of the case to pop the back case off



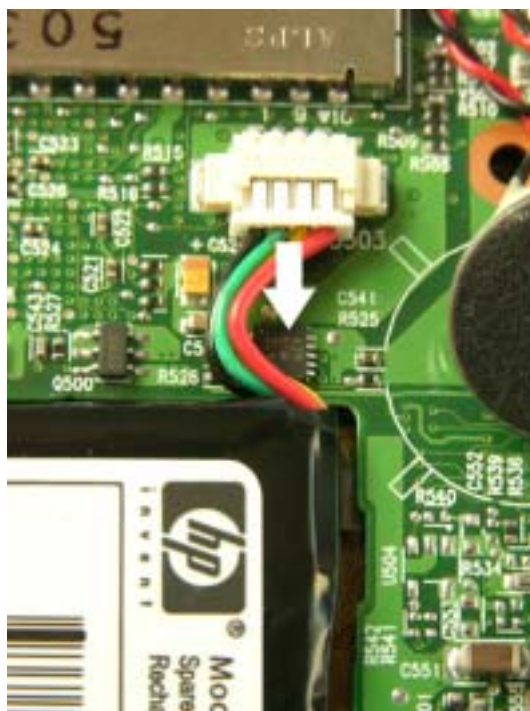
Step Three

Once the back case is off you will find the inner working of your iPAQ unit with the battery in the bottom left of the main board. (please note the speaker in the middle right of the main board, be sure that this is in the correct position when you reassemble your unit)



Step Four

The battery is connected to the main board via a cable, this is easily disconnected by using your nails to pull the white cable head away from the socket.



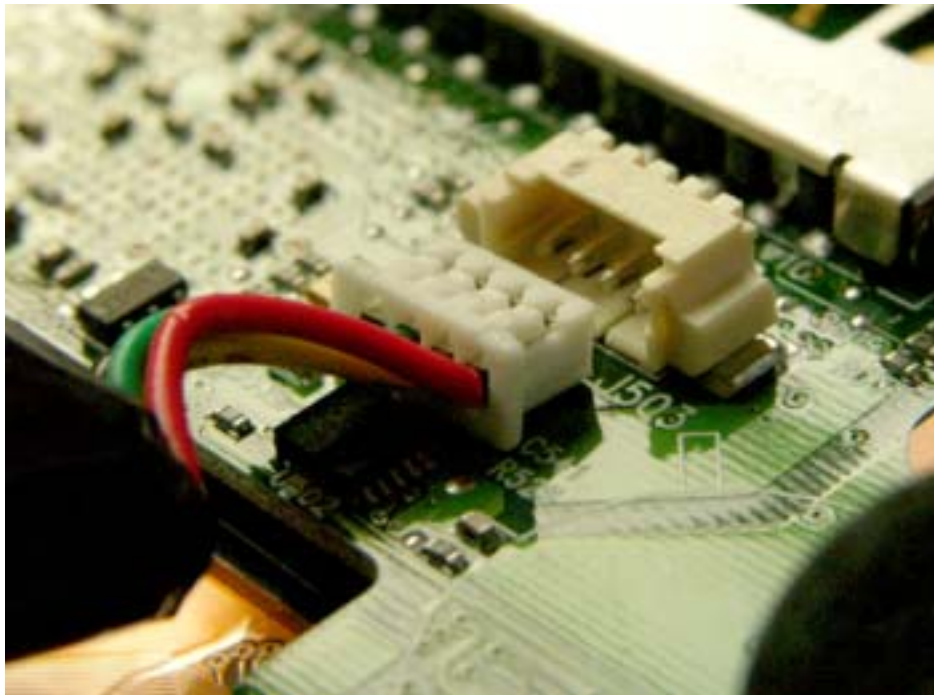
Step Five

The battery is also attached via an adhesive strip, this is removed by carefully pulling the battery away from the main board.



Step Six

To attach your new battery simply lay it in the same position as the old battery, and reconnect the cable head to the battery socket.



Step Seven

With this complete you are ready to reassemble your iPAQ unit, reattach the back case (making sure that the battery and speaker are in the correct positions). With the back case clipped in you only have to reinsert and tighten the remaining screws.



Voila! You have successfully replaced your iPAQ rz1700 series battery. Now be sure to fully charge your unit (until the orange charge light is steady) and your unit is ready to use!

The text and images are © Nathan Dickman if you wish to distribute or use this document in any way please make contact via the website located at:

http://www.ipaqrepair.co.uk/contact_us.php

Revision History

Version 1.1 10:22 03/12/2006